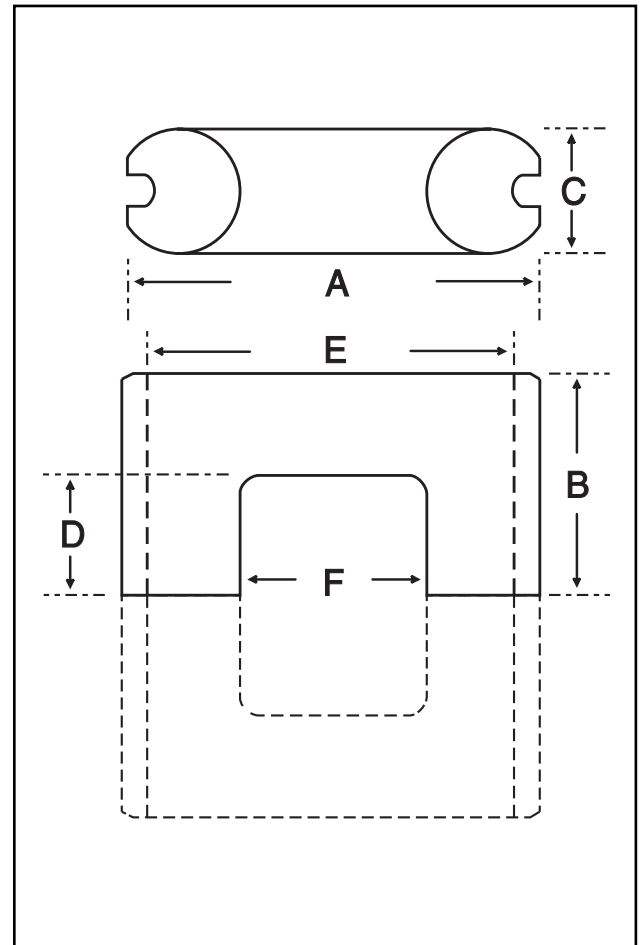


Dimensions

Symbol	Value (mm)
'A'	89.64-92.36
'B'	44.33-44.73
'C'	14.75-15.25
'D'	30.28-30.78
'E'	86.00 nom
'F'	61.00 min

Effective Geometric Parameters

Parameter	Symbol	Value	Unit
$\Sigma(l/A)$	$C_1$	1.553	$\text{mm}^{-1}$
effective magnetic path length	$l_e$	275.20	mm
effective area of magnetic path	$A_e$	177.20	$\text{mm}^2$
minimum area of magnetic path	$A_{\min}$	-	$\text{mm}^2$
effective volume	$V_e$	48751	$\text{mm}^3$

Electrical Specification

Grade	$A_L$ Value	Tolerance on $A_L$ (%)	Gap Length (mm)	Eff. Permeability	Part No.
F48	1700	+30/-20	-	$\approx 2040$	34-544-48